

- **Optimisation of principal particulars and ship lines for high efficient hydrodynamic speed/power performance and low fuel consumption**

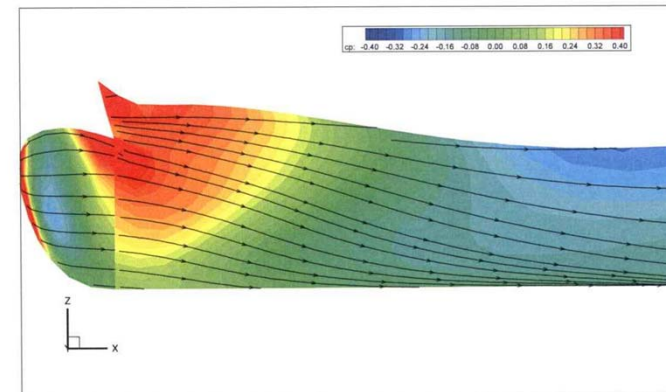
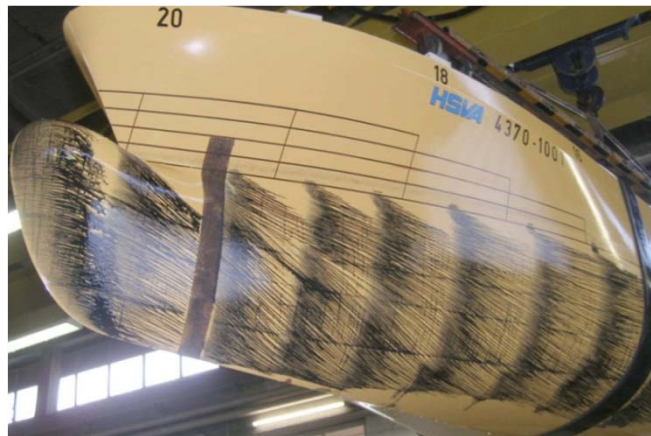
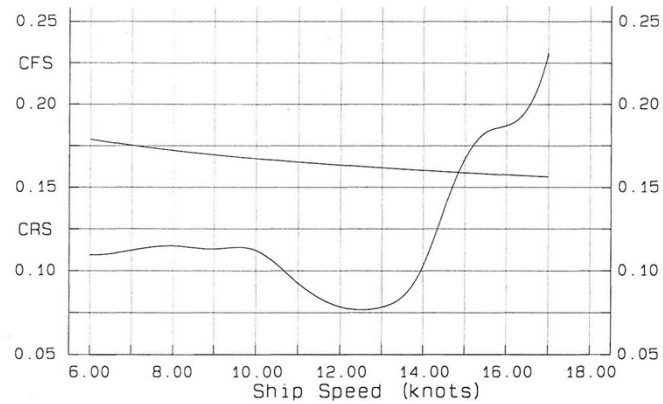


Fig. 6 – The streamlines for optimized hull (fore part of the ship starboard view) potential nonlinear calculation

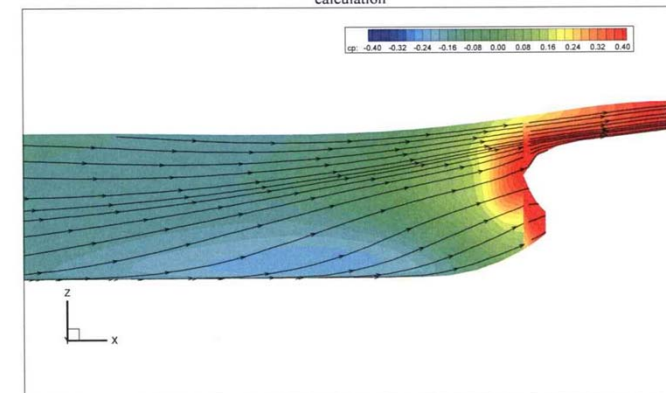


Fig. 7 – The streamlines for optimized hull (aft part of the ship starboard view) potential nonlinear calculation